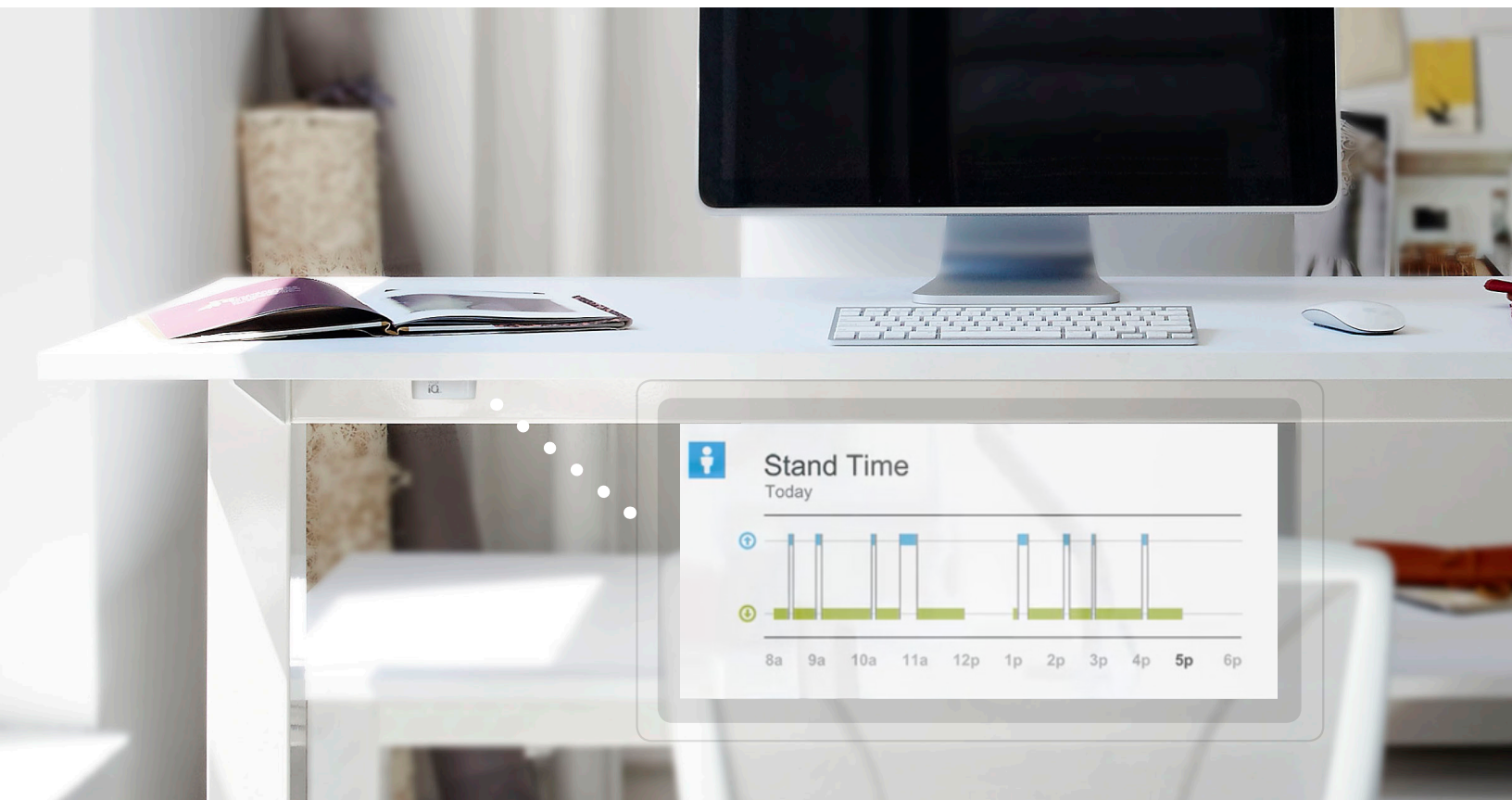


OFFICE iQ™



Pairing software innovation with Humanscale's expert ergonomic design, OfficeIQ is the ultimate in office intelligence and the next step in transforming traditional offices into active workspaces. Integrated into ergonomic furniture, OfficeIQ alerts users when to sit or stand and encourages balanced movement. Making furniture work for people, OfficeIQ helps users make healthier decisions throughout their day — not just in the office.

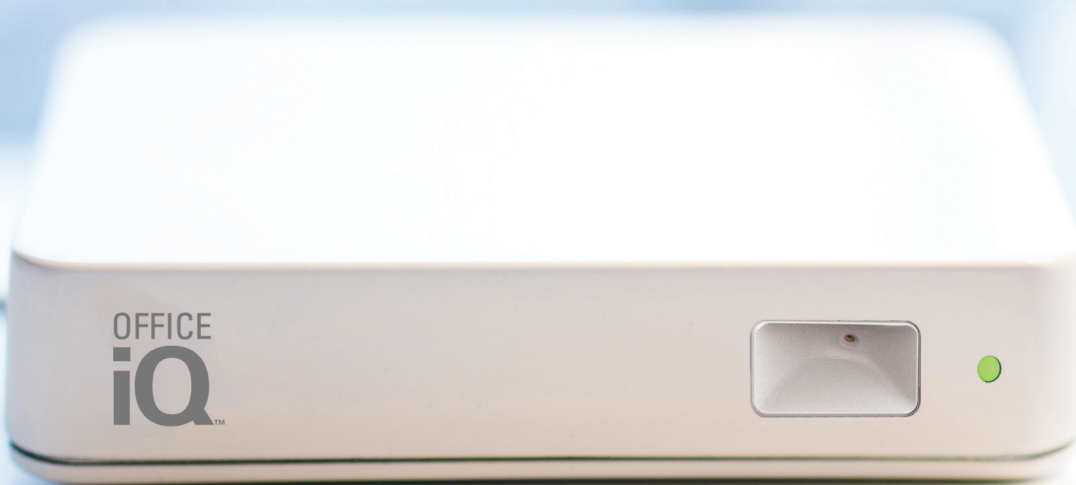


Features

- Unobtrusive, lightweight sensor box sits on or under the work surface*
- Gentle alerts remind users when to sit or stand
- Measures and provides real-time feedback on incremental caloric expenditure
- Provides target and actual standing time stats to indicate progress toward personal goals
- Uses Bluetooth Low Energy (BLE) wireless connectivity, ensuring up to 100 feet (approximately 150 desks) of unobstructed range between sensors and OfficeIQ Gateway
- Personal information is protected by the "Don't Be Creepy" privacy policy
- Provides aggregated and anonymous sit/stand utilization data
- Now available for order with our Sit/Stand line



Company Dashboard features live updates



*Consult installation instructions for sensor placement location, by product

Specifications

- Native for Mac OS X Mavericks (version 10.9) or later and Windows Vista (with .NET 4.5 required) or later
- Software connects to Tome's WorkDesk platform through an active internet connection.
- Software connects to Tome's WorkDesk platform through an active internet connection.
- Gateway includes HDMI output to display the OfficeIQ Dashboard to any HDMI TV or monitor
- Gateway requires a simple IT setup and does not require that the sensor gain access to corporate LAN
- Weight: - QuickStand Sensor: 0.21 lbs (3.4 oz)
- Float Sensor: 0.19 lbs (3.1 oz)
- Gateway (without wall plate): 0.33 lbs (5.2 oz)
- Power: - Sensors: USB Power; AC adapter sold separately
- Gateway: AC adapter (included)
- Sensors attach with Dual Lock™ (included)

White with a gloss finish

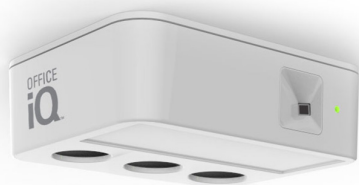


Black with a gloss finish



**not available for Gateway*

OfficeIQ Sensor:
QuickStand



OfficeIQ Sensor:
Float

Gateway



Uses Bluetooth Low Energy (BLE) wireless connectivity, ensuring up to 100 feet (approximately 150 desks) of unobstructed range between Sensors and Gateway



OfficeIQ Ideal for

- Corporate office workspaces
- Conference rooms
- Collaboration spaces
- Hot desks

Design Story

Humanscale and Tome embarked on a journey to create OfficeIQ because we share similar values. We wanted to encourage more movement and activity in the workplace and contribute to an overall healthier, more active life for people.

By integrating Tome's software into Humanscale's expert ergonomic design, we have created a solution to combat sedentary behavior that aligns with our core values of simplicity and ease of use. OfficeIQ will help to ensure that sit/stand users gain the full benefits of their ergonomic workstations and will help employers see real returns on their investments in developing healthier and happier places to work.



In Partnership with
 **Tome**