



388 Series

Our biggest and most popular series!

More than 800 SKUs plus full customization available.





COVER:

Layout #16

Shown in: Auburn with Black Bases

108.5" x 106.5"



Layout #14

Shown in: Grey Dusk and

Pure White

106.5" x 112.5"

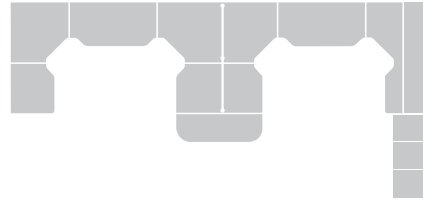


Layout #37

Reception Desk: 100.5" x 88.75"

Shown in: Desert Sand and Black





Layout #17
Shown in: Grey Base
with Charcoal Matrix
133.75" x 286"



Layout #13
Shown in: Hardrock Maple
71" x 71"

The **388 Series** blends form and function beautifully with high quality materials and workmanship to create the perfect work environment. Contemporary styling and a long history of creating unique spaces with custom designed components as well as seamless integration with other series components if desired, are all hallmarks of our highly functional **388 Series**. Organize your office in style with a wide choice of storage options to make your space your own. With an eye on tomorrow, 388 is the ideal solution for today's busy office.



Layout #36
Shown in: Winter Wood
71" x 88.75"



Layout #18
Shown in: Pure White and Auburn
166" x 92.75"



Layout #11
Shown in: Black Walnut
Desk: 41.5" x 71"
Hutch Unit: 19.75" x 106.5"



Neo Angle - Reception Layout
with Outlines Series Panels
Shown in: Evening Zen Base
with Hardrock Maple Top
95" x 95"





Layout #35 - Height Adjustable Bases
Shown in: Winter Wood and Grey



Layout #16
Shown in: Auburn
108.5" x 106.5"



388

The 388 Series is designed and built to withstand the demands of a hectic office environment. Maintaining an attractive, "as new" appearance for years, our quality speaks for itself. Every 388 component uses commercial grade, mar-resistant, thermally fused laminates with matching 3mm thick PVC edges. Other benefits include metal to metal fittings that maintain product integrity, allowing for quick, easy assembly and reconfiguration.

The Heartwood team has been building office furniture for over 30 years and we guarantee our quality for years of trouble-free performance. With over 800 components to choose from, the 388 Series is the ultimate and trusted solution for today's busy office.

We love custom work! Heartwood has the systems and the experience to build the custom pieces you need...all shipped with our FAST lead times.

Available Finishes

** Textured Finish



Auburn
AB



Autumn Maple
AM



Black
BL



Black Walnut
BW



Cappuccino Dream
CD**



Charcoal Matrix
CM



Cherry
CY



Desert Sand
DE



Driftwood
DD



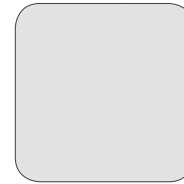
Driftwood Grey
DW**



Evening Zen
EZ



Graphite
GT



Grey
GR



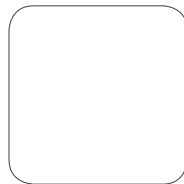
Grey Dusk
GD



Grey Matrix
GM



Hardrock Maple
HM



Pure White
PW



Royal Mahogany
RM



Seaside White
SW



Sugar Maple
SM



Winter Wood
WW

Available Handles



Arched

Black / Nickel



Double Arched

Black / Nickel



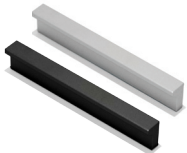
Step

Champagne (2 sizes)



Fluted

Black or Champagne



Bar

Black / Aluminum



Bridge

Aluminum



Scoop

Aluminum (2 sizes)



Scoop

Black (2 sizes)

Finishes:

Two tone laminate finishes available at no additional upcharge.

Handles:

Choose any handle style or size at no additional upcharge.



ECO STORY

Heartwood is committed to supplying office furniture products in an environmentally responsible manner. We are proud to partner with like-minded corporate citizens who align environmental stewardship with their company's core values and goals.



LIMITED LIFETIME WARRANTY

Heartwood Manufacturing Ltd. is pleased to offer a limited lifetime warranty on all laminate products. This warranty guarantees all products to be free from defects in materials and workmanship.



MADE IN CANADA

Heartwood is proudly Canadian. Located in beautiful Kelowna, British Columbia, Heartwood is committed to the highest standards of furniture manufacturing and employee safety.